

On Point!

A Publication of the Northern Star Quilters' Guild
Somers, New York
January 2001

Volume 19, Number 5

A Message From the President

I'm very embarrassed for canceling December's meeting and not a snowflake fell until after midnight! Oh well, I hope you heard the cancellation notice on the radio or from a friend, and that it won't happen again!

We will have the "Winter Wonderland" grab bag gift exchange at the January meeting. The gift is 5 fat or straight 1/4 yards with a Winter Wonderland theme. You must bring a present to get a present.

I hope you all had a wonderful holiday with family and friends, maybe a moment or two to do some sewing! Now for the long, dark, cold winter months to finish your projects for the

"World of Quilts XXII" in May. Don't forget to check where the Raffle Quilt will be, to help with the quilting. "A quilt is not a quilt until it is quilted." January's meeting will be a busy one with the fabric (6 blue 6 inch squares), Round Robin, and Winter Wonderland gift exchanges, quilt book and magazine sale to benefit the Library, RQ02 block returned, Surface Design Challenge, Show-'n'-Tell and a program. So it had better not snow! I can't believe I'm saying that, I love snow and will drive 300 miles to ski in it!

Love,
Linda

And now we have snow!

What if there is snow the night of a General Meeting?

Please always use your best judgment about nighttime winter driving to guide your decision about coming to a NSQG meeting. But if you are undecided the rule is: "If the Somers schools are closed, because of snow, there will be no meeting."

Closings are announced on radio stations WHUD or WVIP and in CT, station WINE. Should the weather become questionable later in the day, I will call the stations with a NSQG cancellation notice. You can also

call any Board
Member for
cancellation information.



Fabric Exchange

We will have two exchanges going: the January color - WHITE as well as the missed December exchange color - BLUE. Exchange one or the other or both.

Karen Carlson

General Meeting
Tuesday
January 16, 2001
JFK High School
Somers, New York
7 pm

Inside...

Officers/Chairpersons	2
Hospitality	2
Programs	3
Winter Wonderland Exchange	3
Lancaster Trip	3
Ornament Saturday	4
Boutique	4
A Home Can't Have Enough...	4
RQ02 Quilt Update	4
Quilt Show Registration	5
Raffle Quilt 2001	5
Library News/Book Sale	6
Comfort Quilts	6
Education	7
Membership	7
Want to Make A Great Quilt?	7
Block of the Month	8-9
Round Robin	8-9
Road to...	10
Special Sightings	11
Super Saturday	11
Surface Design Challenge	12

2000-2001 Officers and Chairpersons

President	Linda von Ahn* (914) 628-5380**
Vice President(s) Programs	Kathy Vanacoro* (914) 225-0047 Joan Weth* (914) 277-3585
Equipment Assistant	Leslie Forrest (914) 225-9444
Raffle Coordinator	Dorothy Scalice (860) 355-3522 Janice Nastasi (914) 279-8381
Vice President, Membership	Sonny Rieber* (914) 723-9344
Vice President Quilt Show	Marie Sugar* (914) 277-4266
Recording Secretary	Georgia Heller* (203) 358-0333
Corresponding Secretary	Dorothy Fiederlein* (845) 278-1881
Treasurer	Lauren Fowks* (914) 232-8470
Education	Liz Doyle* 914-232-3040
Fabric Exchange	Karen Carlson (914) 762-5382
Ornament Saturday	Joanne Lovitz (914) 232-3043
Super Saturday	Cobb Stewart (914) 238-8653 Eleanor Hibben (914) 962-3983
Library	Susan Chapman* (203) 778-0194
Hospitality	Christine Ruggieri (914) 277-7153 Carol Auэр 845-225-1780
Special Events	Elaine Skorka* (914) 723-6845
Newsletter	Carrie Vollrath* (914) 592-5352
Boutique	Janette Loughlin* (914) 762-6953
Challenge	Suzanne Sunday (914) 234-6810 Jeri Riggs (914) 478-7646 Jennifer Ceisler (914) 232-1146
Comfort Quilts	Pat Baker (914) 279-8840**
Bulletin Board & Quilt Layering	Ina Helfand (914) 245-3173
Raffle Quilt 2001	Betty Edwards (914) 736-0516

*Executive Board Members

**Area Code will be 845 soon so make a note.

On Point! is published monthly except for a combined July/August issue. Subscription to the newsletter is included in the annual \$35 membership fee.

Newsletter Staff

Editor: Carrie Vollrath
Special Events Editor: Nancy Hantman
Editorial Assistant: Dana Fuller

Monthly meetings are held the third Tuesday of each month, September through June, at John F. Kennedy High School, Route 138, Somers, New York at 7.

Articles must be submitted to the newsletter Editor (generally one week) after the general meeting and may be submitted by postal mail, e-mail or fax. e-mail *attachments* cannot be accepted. **Please include your text in the body of the e-mail message.**

The deadline for articles appearing in the February issue is January 22. Send articles and information to:

Carrie Vollrath, *On Point!* Editor
1414 Old Country Road
Elmsford, NY 10523
Phone: (914) 592 5352
Fax: (914) 592 1931
E-mail: caristar@concentric.net

Hospitality—G, H, I, J

Happy new year to all, Hope your holidays were wonderful. For our January meeting we are asking for those with last names beginning with G, H, I and J to bring something to share. With this cold weather, we have been making sure we have Cocoa as well as Coffee and Tea ready when you come in. Please try to remember your mugs.

Chris and Carol



BERNINA
AUTHORIZED DEALER

FABRIC
CLASSES, SUPPLIES



THE QUILT SHOP

16 PADANARAM RD - Rt 37
DANBURY, CT 06811
EMAIL: wamquilt@aol.com

GINNY MURPHY
TEL: 203-743-0545
Fax: 203-797-0936

Programs

Well, we were snowed out in December, but Helen Squire cancelled out on us a week before due to a health problem. We were all prepared to have Adrienne Yorinks do a lecture, but the weather could not make up its mind, and unfortunately we had to cancel. We are very fortunate that Adrienne will be able to join us in January before she goes off to Paducah. Adrienne will be speaking about her quilt illustration work. For those of you who are not familiar with Adrienne's work, she is known for her large commissioned pieces that are of a commemorative nature using photo transfers, as well as her work as a book illustrator. She has illustrated three books to date using textile art in collaboration with text. She will also discuss her new book in progress, as yet untitled, for National Geographic. It is about The United States. She is bringing several of her large pieces to share with us and she will be speaking about the process of creating large commissioned pieces and how that led to her work in book illustration.

This lecture coincides with a special exhibit on her illustration work at MAQS in Paducah, Kentucky that is called "Quilted Illustrations by Adrienne Yorinks" that opens on January 13th and runs through March 10th. She will also be bringing her new line of fabric from Timeless Treasures called "Ocean Dreams" to show as well as add to the raffle.

Kathy Vanacoro
Programs

Lancaster

Since December meeting was canceled, I was unable to collect checks for Lancaster. Since I will be away January and February, I will need you to mail checks to me.

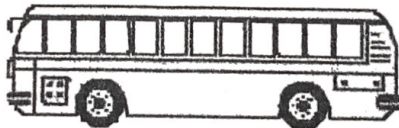
The trip cost is \$150. Please make out checks to NSQG and mail to me at:

Elaine Skorka
40 Greendale Road
Scarsdale, NY 10583

I will receive all my mail, e-mail and telephone messages. So, however you choose to reach me, I am available.

There are still spaces available for Lancaster. The bus leaves Friday, March 16, 2001, and returns Saturday, March 17, 2001. The trip includes bus, two dinners, one breakfast and one day admission to show. Let me know whom you wish to room with and any other questions you may have. Happy and healthy New Year to all and their families.

Elaine Skorka
essews@aol.com
914 723-6845



FREE LIKE NEW DSIGN-A-Quilt

Long Arm quilting machine system, batting, external bobbin winder, instructional video, extra bobbins, and needles. You remove from premises.

Jeanne Homan 845 628-3887

PINWHEELS



416 ALBANY POST ROAD
CROTON-ON-HUDSON
NEW YORK 10520

914-271-1045
www.pinwheels.com

Important Dates

Jan. 4	Comfort Quilts
Jan. 16	General Meeting JFK H.S. — 7 pm
Jan. 22	Exec. Board Meeting <i>On Point!</i> Articles due
Feb. 20	General Meeting JFK H.S. — 7 pm
Feb. 27	Exec. Board Meeting <i>On Point!</i> Articles due
March 16	Lancaster Trip
Mar. 20	General Meeting JFK H.S. — 7 pm
March 27	Exec. Board Meeting <i>On Point!</i> Articles due
March 31	Super Saturday

Winter Wonderland Fabric Exchange

The Winter Wonderland fabric exchange will be held at the January meeting.

All fabrics should express something about winter—ice skating, sleds, snow, you get the idea...

You must bring a present to get a present.

Ornament Saturday

The liaison from Putnam Hospital notified me that "our tree" brought in \$500 at their annual fund-raising dinner which was held in early December. The hospital thanked our Guild very warmly for our donation of ornaments, a tree skirt and tree topper. Thanks to everyone who participated at Ornament Saturday.

Joanne and Kate

Holiday Boutique

Now that the holidays are over, I hope you can start to think about the Show Boutique. Did you learn a new technique that you would like to make into a wall hanging? Baby things always go over big as do gift items for the home. Some of our vendors have been quite successful recently. Why not join them by putting your beautiful items in the Boutique!

Janette Loughlin

RQ02 Update

Barbara Hicks and Lynnette Clemens are hoping for good weather the night of the January NSQG meeting so they can distribute the 3rd and 4th mystery packets for Raffle Quilt 2002. If you have completed squares to turn in, please bring them to the January meeting or mail them to Barbara or Lynnette.

Barbara Hicks
Phone: 203-329-8075
E-mail: bhicks@archstlaw.com

Lynnette Clemens
203-622-1100, Ext. 330
E-mail: LSCLEM@aol.com

??????

NSGQ 2001 Raffle Quilt

Thank you to all who have signed up to work on hand quilting the 2001 Raffle Quilt. Dates are still available if you are interested in participating and have not yet signed up. Quilting is scheduled on a 2-week rotation. If you have not signed up and live near someone who is on the list below, please contact them to inquire about working on the quilt during the time period that they have it. If you are interested in signing up for one of the available dates, please call me evenings at (914) 736-0516.

Thanks
Betty Edwards

Dates	Name	Address	Phone
12/12-12/26	Open		
12/26-1/9	Brenda Strauss	54 Sunset Dr., N. Salem, NY	914-277-3884
1/9-1/23	Rene Bracken	206 Centre St., Buchanan, NY	914-737-5508
1/23-2/6	Kelly Lockwood	17 Bronxville Rd., Bronxville, NY	914-779-0876
2/6-2/20	Ann Fitzell	1825 Darby St., Yktwn Hgts., NY	914-962-3132
2/20-3/6	Nancy Pruyne	97 Eastview Dr., Valhalla, NY	914-741-0366
3/6-3/20	Open		

A home can't have enough...

I urge anyone who is still interested in making a wall quilt for the Silent Auction to register your theme. I had optimistically reported there would be 50 silent auction quilts in the quilt show brochure and I seem to be falling several short.

In December, I met with Kathy Roig from the Women's Center in Danbury, Connecticut. The Center is a large, cheery, centrally located office where many women, mostly victims of domestic violence, come for counseling and other support services. This is the first step for a new beginning for themselves and their children.

Luckily for me, several eager Guild members had given me their absolutely lovely quilts and I brought them to show. The women were simply astounded at the quilts' beauty and they kept stroking them. How could I tell them they needed white gloves???? Kathy said she couldn't imagine what the quilts would look like, and it was exciting giving her a preview of what was to come. I also showed her a list of the topics already chosen. The Women's Center has many contacts in the Danbury area and local media. We are planning to get the word out in the spring months about our show and silent auction.

If you have completed your quilt, please bring it to the January meeting. Of course, the quilts are not due until April, but I know that some of you have them completed. I would like to photograph some for our website. It will be helpful to have something tangible and beautiful to show when I go to the newspapers. It's next to impossible for a non-quilter to envision how a concept can be translated into fabric. A feature story with many illustrations will certainly attract more attention than just words!

Please.....Don't forget to sew a sleeve on the back. The quilt should be approximately 96-in. perimeter. It doesn't have to be a square—any shape is fine. Also, if you wish to make a book bag, tote bag, any saleable item, that's fine, too.

2001 Quilt Show Registration Information

With the holidays over, many of us are glad that the chaos is done with (at least temporarily) and we can get back to our quilting. With that in mind, the registration forms for the World of Quilts XXII will be available at the January Guild Meeting! Please note that there have been several changes in the form. For example, "cheater cloth" quilts will no longer be accepted into the Show. Also, The Quilt Shop in Danbury has been added as a quilt drop-off point before the Show. And the biggest change of all: the categories have been completely reorganized and are as follows:

Quilt Categories

Predominantly Hand Quilted Quilts Made by One Person

- 100 Hand Quilted Bed Quilts
- 200 Hand Quilted Wall Hangings (perimeter of 160" or more)
- 300 Hand Quilted Wall Hangings (perimeter of less than 160")

Predominantly Machine Quilted Quilts Made by One Person

- 400 Machine Quilted Bed Quilts
- 500 Machine Quilted Wall Hangings (perimeter of 220" or more)
- 600 Machine Quilted Wall Hangings (perimeter of more than 160" and less than 220")
- 700 Machine Quilted Wall Hangings (perimeter of more than 120" and less than 160")
- 800 Machine Quilted Wallhangings (perimeter of 120" or less)

Hand and/or Machine Quilted Quilts Made by More Than One Person

- 900 Two Person Quilts (Any two person collaboration including quilts with tops made by one person and quilted by another)
- 1000 Group Quilts (Made by more than two people)

Special Category Quilts

- 1100 Miniature Quilts (Overall pattern reflecting reduced scale. Perimeter not to exceed 96")
- 1200 Special Techniques (All sizes; unusual techniques such as yo-yo's, crazy quilts, photo transfer, whole cloth, stenciled or painted fabric and embellished quilts.)
- 1300 Kits and "Block of the Month" Quilts. (All sizes. Includes any quilt that was made from a kit or a "Block of the Month" package in which the pattern and the fabric were provided to the sewer. This category will be judged on workmanship only.)
- 1400 Young Quilters (All sizes and techniques. Piece must be made by a 14-year-old or younger with little or no help from an adult. One per child. Please state age on registration form. The first 15 entries will be accepted.)
- 1500 Unjudged (All sizes and techniques. Also including antique quilts and articles of clothing.)

Finally, please note that this year, unjudged quilts (category 1500) will not be hung together as a group as in the past, but will instead be hung throughout the gym, interspersed with the judged quilts.

A home can't have enough...

(continued)

If you want to participate in this exciting event, please don't hesitate to call, e-mail or sign up at the meeting. If you need a suggestion for a theme, give me a call I have lots more!

Alice F. Garrard
Ruffer123@aol.com
(203) 938-9661



Library News

Just a reminder to the ladies that have overdue books please make sure you return them this month. If you are not going to be at the meeting you need to either mail them to me or have someone else bring them to the meeting.

Here is the list of overdues:

October

Eileen Ford 3 Books

November

Kathy Nazario 1 Book

Marie Sugar 1 Book

Chris Ruggieri 2 Books

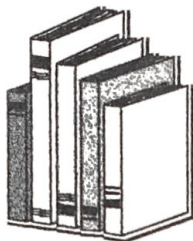
Linda Schattschneider 2 Books

Diana Osselman 1 Book

Lois Greagor 1 Book

Linda Gilles 1 Book

Andrea Winter 1 Book



Don't forget the book sale. I really need some ladies to help me out. I cannot run the library and the book sale. If you want to work at the library/sale table please e-mail me or give me a call.

Susan Chapman

203-778-0194

3003 Hancock Drive

Danbury, CT 06811

susanc@ntplx.net

January Book Sale!!!

Bring in your old quilt books and magazines.

Magazines will be 25 cents or 5 for a \$1.

Proceeds from the sale will benefit the library for the purchase of new books/magazines. Please make sure you pick up any books/magazines that are left at the end of the meeting. Anything left behind will be discarded.

Hardcover Books \$2

Softcover Books \$2

Magazines 25 cents each or 5 for \$1

**Helpers are need to work the booksale table.
Please call Susan Chapman or e-mail asap.**

Comfort Quilts

I am trying not to "bust my buttons" with pride. In the last few weeks, the Comfort Quilt Committee has placed:

45 quilts and one wall hanging at the
Westchester Medical Center

20 quilts at the Westchester-Putnam Women's Shelter

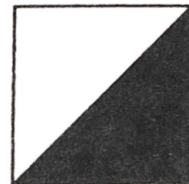
10 quilts at My Sister's Place, another women's shelter

1 quilt to the Putnam Hospital Auxiliary
to be auctioned to benefit the hospital

1 quilt to the Katonah Presbyterian Church to be used as
the church sees fit in appreciation of our working space

What wonderful people quilters are!

And for a less cheery message. If you have a "CAT" KIT, please read all of the directions. For every cat image (there are 20 in each kit), you should be returning a square that looks like this.

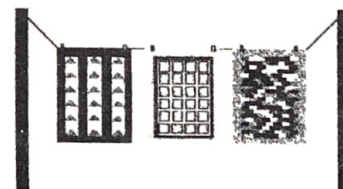


As we made more than 20 of these kits, we should be receiving over 400 blocks, which is a resource for the committee. **Please, please, always read the directions**, no matter how experienced you are.

Happy 2001 to us all!!

Pat Baker

**Committee Meeting Dates:
Jan. 4 and 18, Feb. 1
(all Thursdays)**



THE CITY QUILTER



157 West 24th St.
212-807-0390

Tuesday - Friday,
11 to 7
Saturday, 10 to 6
Sunday, 11 to 5

**Come visit us on your next
trip to Manhattan!**

Located between 6th & 7th Avenues
near the Chelsea shopping
& art district, bus & subway lines.
Adjacent to parking.

Education

Happy New Year!! I always find this to be the dreariest time of year and looking for something fun to do don't you? Now that the holidays are over take a moment to look at the list of upcoming workshops and treat yourself by signing up for one or more. All classes are still only \$30.

I still have LOTS of openings in the Judy Irish classes. She and her husband will be moving soon so this will be one of your last chances to take a class from her. On Saturday, January 13 she will be doing a modified version of her big Chicken Quilt and on Tuesday, January 16 she will do "The RED Quilt OR Any Other Color You Want to Make Quilt! Why not give me a call right now and I will get the supply lists to you right away. Of course, if winter weather forces us to cancel, we will reschedule these classes at the earliest possible date!

Here is a quick rundown of the classes for the rest of the year. Call me if you want more details.

March 21 - Meg Mooar - "String Pieced Star"

April 17 - Elizabeth Hendricks - "Bobbin Quilting"

April 18 - Elizabeth Hendricks - "Joys of Couching"

May 7 - Linda Cantrell - "Fantasy Flowers"

May 7 & 8 David Walker - a two-day workshop called "Small Works II." This class will be \$60.

You may register for any or all of these classes at any time. Just send a check and a self-addressed stamped envelope for the supply list. (I will have envelopes and stamps available at meetings for a nominal fee of 35 cents. I will mail the supply lists at about one month in advance). You can sign up at the meetings by simply placing your check in your envelope in the registration box at the education table.

See you at the meeting!

Liz Doyle - 914-232-3040
84 Mustato Road
Katonah, NY 10536
Elizied@AOL.Com

Volunteer to Help at the Quilt Show

Now is the time to sign up for your favorite spot at our upcoming quilt show. The earlier you sign up the better your chance to get the job you want.

Look for the sign up sheets at the next meeting. Remember a free entry into the Show is yours for two hours of volunteer time.

Thank you
Judy Jones
Volunteer Chairperson

Want to Make a Great Quilt?

Have you ever seen two beautiful quilts side by side, one with a blue ribbon and one without a ribbon? Have you wondered what led the judges to their choice? Do you know what makes a great quilt? First and foremost measure your quilt by your enjoyment in making it and/or the pleasure of the person receiving or owning it. But after personal pleasure, what makes one quilt "better" than another?

The Show Committee is streamlining this year's judging form so that there are fewer and consequently more general criteria for judging the quilts. It was suggested that the membership might be interested in the more specific criteria that was used for judging from previous years for evaluating your quilts on your own. So whether you are having your quilt judged or not, here are some things to think about.

Visual Impact

1. Design is well proportioned, with rhythm and balance.
2. Color, value and fabric choice enhance the design.
3. Pattern, piecing, border, color and quilting are well integrated.
4. Quilting design enhances the quilt.
5. Strong emotional impact.

Workmanship

1. Seams are flat, junctions meet, no shadowing, points sharp, curves smooth, no puckers or pleats.
2. Stitches are strong, even invisible or complementary.
3. Sashing/borders are straight and even, miters are accurate.
4. Binding/edge finish well executed.
5. Quilt hangs or lies straight.
6. Quilting is even, consistent stitches front and back causing no distortion.
7. Marking, knots, traveling stitches not visible.
8. Quilting lines are straight, curves are smooth.



PiecefulAcrePatterns.com

Quilt Patterns on the Internet
JoAnn Brown, Owner
(203) 748-1094 or (203) 791-9814
E-mail: PiecefulA@aol.com

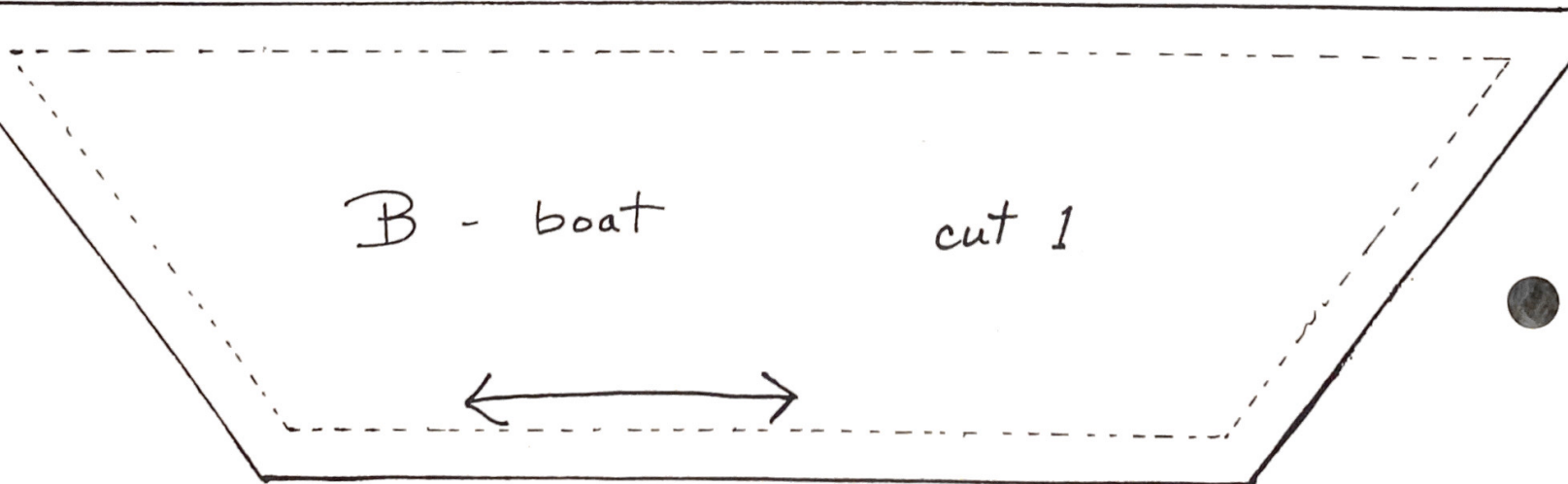
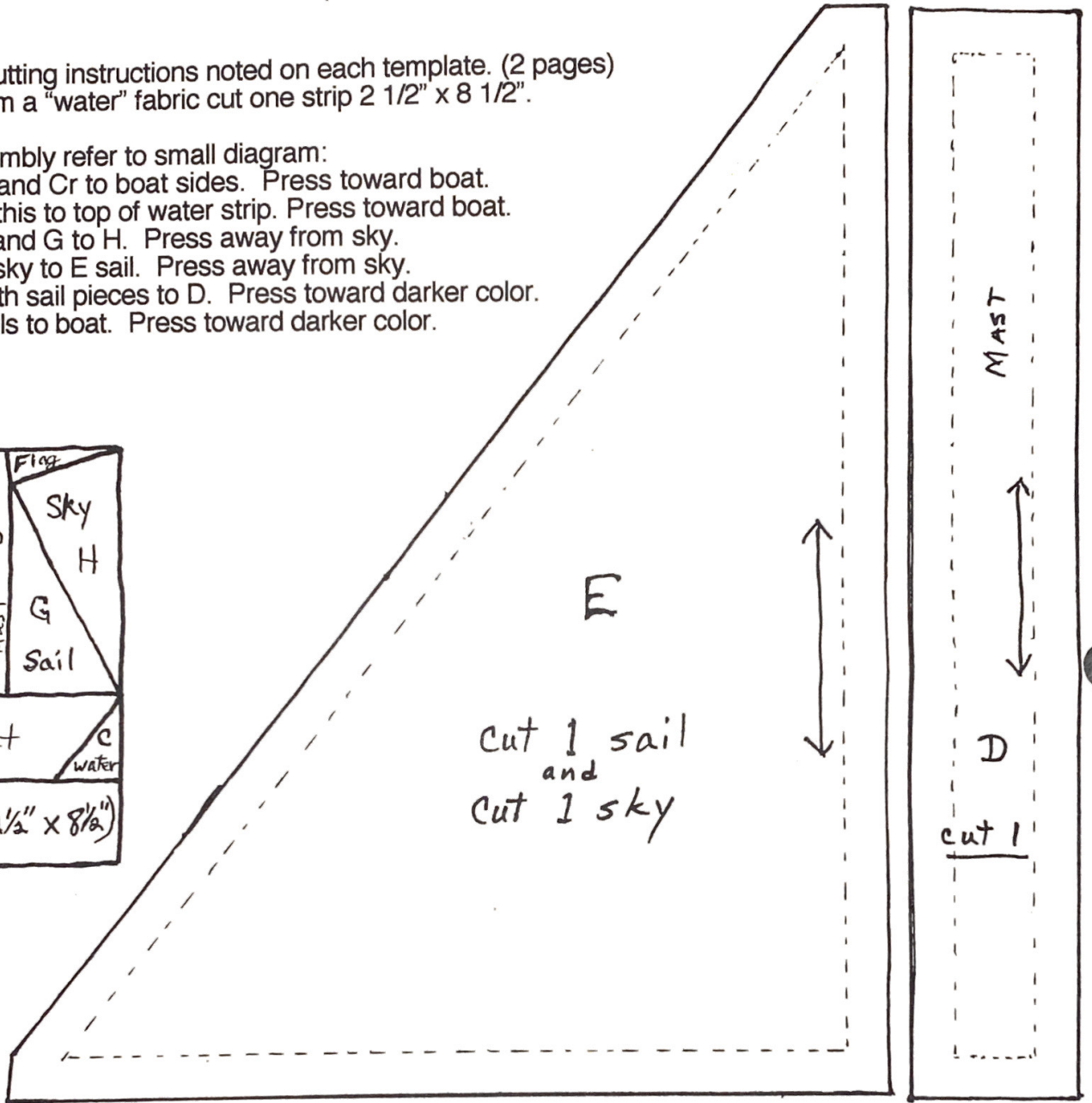
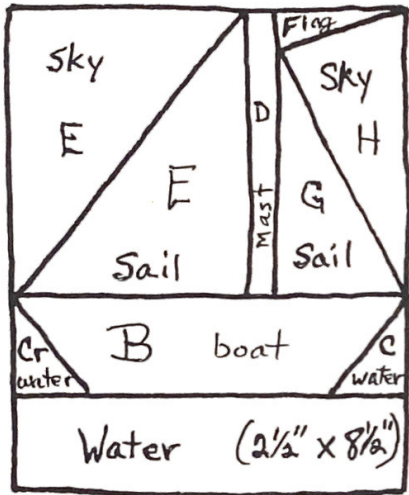
January - BLOCK-of-the-MONTH

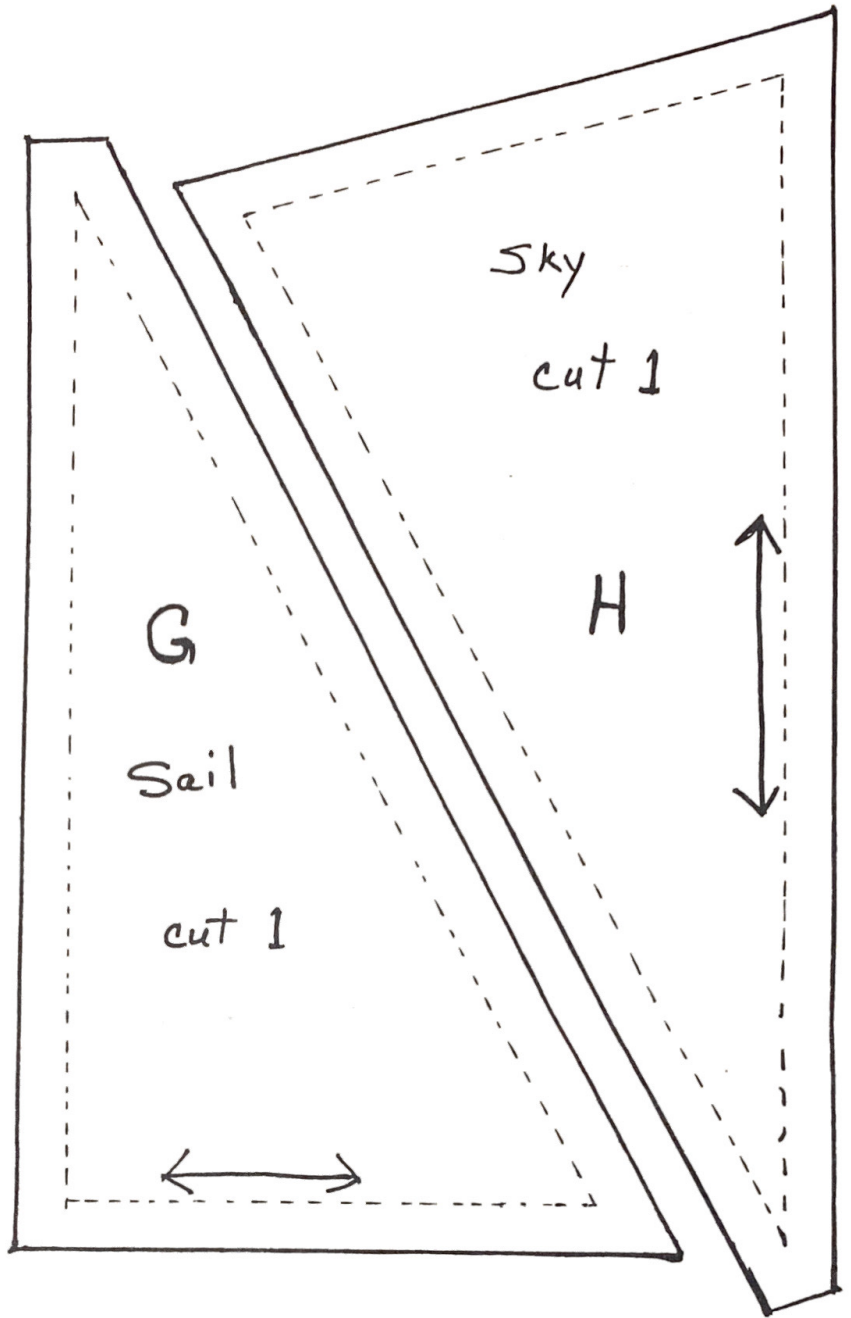
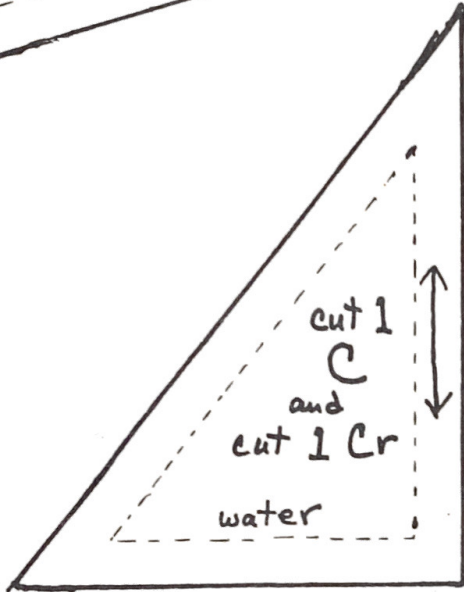
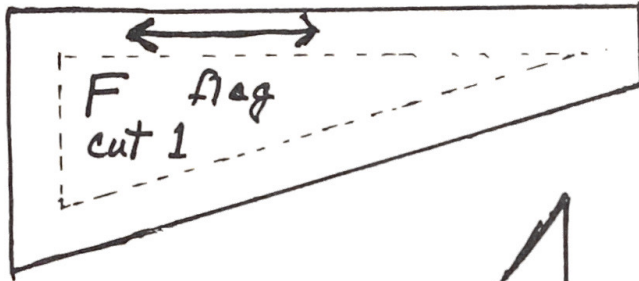
BOAT (block size - 8 1/2 x 10 1/2)

Follow cutting instructions noted on each template. (2 pages)
Plus, from a "water" fabric cut one strip 2 1/2" x 8 1/2".

For assembly refer to small diagram:

- Join C and Cr to boat sides. Press toward boat.
- Attach this to top of water strip. Press toward boat.
- Join F and G to H. Press away from sky.
- Join E sky to E sail. Press away from sky.
- Join both sail pieces to D. Press toward darker color.
- Join sails to boat. Press toward darker color.





ROUND ROBIN QUILTERS

Add 6" borders to the top and bottom of the quilt top. Use curves in some form in these borders -- as few or as many as you wish. This will make the quilt top oblong rather than square, approximately 33" wide by 45" long.

Have completed for exchange at the March meeting.

Road to . . .

A comprehensive list compiled by Nancy Hantman

Exhibitions and Shows

- Tarrytown, NY: Art Quilts by Dominic Nash, now through January 9 (by appointment), Landmark at Eastview, 777 Old Saw Mill River Road. Contact: Artworks Fine Art Advisory, 203-637-5562.
 - Washington, DC: Spirits of the Cloth, now through January 21, Renwick Gallery, Smithsonian American Art Museum; 202-357-2700.
 - Harrisonburg, VA: Basket Quilts, now through January 29, Virginia Quilt Museum. SASE to VQM, 301 South Main Street, Harrisonburg, VA 22801; 540-433-3818.
 - Lincoln, NE: Quilts from the Robert and Helen Cargo Collection, January 12-April 1, Sheldon Memorial Art Gallery, University of Nebraska-Lincoln.
 - Lowell, MA: "Mementos. Memories, and Meditations: Nancy Crasco and Judi Warren Blaydon," January 18-March 24, New England Quilt Museum, 18 Shattuck Street; <http://www.NEQuiltMuseum.org>.
 - Tucson, AZ: "Portraits in Cloth: Tohono O'odham Quilts of Goldie Richmond," January 26-May 31, Arizona State Museum. SASE to ASM, PO Box 210026, Tucson, AZ 85721; 520-626-8381; fax 520-621-2976; <http://www.statemuseum.arizona.edu>.
 - Troy, NY: NYQuilts!, May 19-20, Russell Sage College, First Street. LSASE (55 cents) to NYQuilts!, P.O. Box 93, Brainard, NY 12024.
 - Hunter, NY: Great Catskill Mountain Quilt Show, July 14-15. SASE to The Catskill Mountain Foundation, Inc., P.O. Box 924, Route 23A, 7967 Main Street, Hunter, NY 12442; 518-263-4908.
 - Philadelphia, PA: "Transformation, Reflection, Connection," permanent display of 10' by 30' alumnae quilt, Penelope P. Wilson Hall, Moore College of Art and Design.
- ## Other Events
- Lowell, MA: Documentation days for pre-1950 Massachusetts quilts, third Friday of each month throughout 2001, New England Quilt Museum, 18 Shattuck Street; <http://www.NEQuiltMuseum.org>. Call 978-452-4207, ext. 15 for an appointment.
 - Williamsburg, VA: Elly Sienkiewicz Applique Academy, March 29-April 1. Send \$1.00 and LSASE (55 cents) to Bette Augustine, P.O. Box 3143, Idyllwild, CA 92549; 909-659-9035; bette@gremail.net; <http://www.ellysienkiewicz.com>.
 - Maui, HI: Quilt Hawaii 2001, July 3-8. Send \$2.00 to QH '01, c/o Ellen Peters, 27 Tremont Street, Laconia, NH 03246; <http://www.quiltventures.com>.

- Marion, IN: The Quilters Hall of Fame Celebration, July 19-21. SASE to The Quilters Hall of Fame Celebration, P.O. Box 681, Marion, IN 46952; 703-255-5425, fax 703-255-5143; KareQuilt@aol.com.
- New York, NY: "Quilted Constructions: The Spirit of Design" Contest. SASE to Quilt Contest, Museum of American Folk Art, 555 West 57th Street, New York, NY 10019.
- Lincoln, NE: The American Quilt Study Group is collecting information. Contact: AQSG, 35th & Holdrege, East Campus Loop, P.O. Box 4737, Lincoln, NE 68504-0737; <http://www.2h-net.msu.edu/~aqsg2@unl.ed>.
- Paducah, KY: AQS shows and workshops throughout 2001. Registration: \$1.00 to AQS, PO Box 3290, Paducah, KY 42002-3290; 270-442-8856, ext. 25; <http://www.quiltmuseum.org>.
- Nationwide: American Quilters Society authors on television. Check local listings or <http://www.hgtv.com>.
- Bookstores: "In the Hollow of Your Hand," slave lullabies collected by Alice McGill and illustrated by quilt artist Michael Cummings; Houghton Mifflin Company, Boston, MA, \$18.00.
- Libraries: "So Sew Me" by Chana R. Schoenberger, Forbes, December 25, 2000, p. 90 (about copyright, designs, and the battle for intellectual property).

World Wide Web Sites

- "Looking for Madam Tetrachromat" (Glenn Zorpette's article about women with four-color vision) at <http://www.redherring.com/mag/issue86/mag-mutant-86.html>
- Margaret Cormack at <http://www.pansyquilt.com>
- The People's Place Quilt Museum at <http://www.ppquiltmuseum.com>
- Quilter's Confectionery at <http://www.quiltcandy.com>
- QuiltersMall.com at <http://www.QuiltersMall.com>
- Speed Stitch, Inc. at <http://www.speedstitch.com>
- Texuba at <http://www.texuba.com>



Quilt Basket

Classes Fabrics Supplies

Shop online at

<http://www.quiltbasket.com>

(845) 227-7606

872 Route 376, Ste. B
Wappingers Falls, NY 12590

Super Saturday, March 31, 2001

Get set to register!

It's time to prepare for our annual day of fun, friendship and learning in classes taught by our own talented fellow guild members

All workshops are Full-Day this year.

Double Pinwheel with Liz Doyle

Using the Eleanor Burns method, you may complete a wall hanging or baby quilt in three or more colors. Machine needed. For beginners and intermediate quilters.

Memory Quilt Techniques with Linda Ostrander

Learn how to plan and execute a memory quilt by transferring photos and other images to fabrics. Overall design and block setting will be discussed. No machine needed. For all levels of quilters.

Reversible Squares—Quilt as You Go with Barbara Powers

Make a hand-quilted, reversible quilt of this prize-winning design. Machine needed. For all levels of quilters.

Topstitch Piecing—Freeform Curves with Karen Eckmeier

Learn how to topstitch gentle "waves" and create your own 3-D water fabric. There are many applications for this technique including the addition of dramatic borders. Machine needed. For all levels of quilters.

Stained Glass Slash 'n' Dash with Harriet Bertsche

Using 12 different squares you will end the day with 12 beautiful, pieced squares for a 38x50-in. quilt. Fast and easy. Machine needed. For all levels of quilters.

Machine Quilting with Joyce Sullivan

Use this day to improve your machine quilting skills by working on Comfort Quilts waiting to be completed. Tips and assistance on machine quilting will be available. Machine needed. For all levels of quilters.

Celtic Basket with Maxine Oliver

Learn hand applique while making a Celtic basket with appliqued flowers. No machine needed. For all levels of quilters.

Floating Stars with Pat Baker

Make one simple block and manipulate the colors to produce stars with light from behind. Quilt is 44x44-in. Machine needed. For beginners and intermediate quilters.

Project samples will be on display at registration, which will begin at 7:00 pm at our January meeting.

The fee is \$15 and includes lunch. Machine Quilting registrants pay only \$5 to cover lunch.

- Checks are payable to NSQG and should be dated March 1st.
- Please bring a SASE with you to the meeting so we can send you your workshop assignment, supply list and a map to the First Presbyterian Church in Katonah.
- Assignments will be designated on a first-come, first-served basis.
- Please have alternate choices selected, since class size ranges from 10-15 students for each class.
- Refund policy: Check are refundable if you get a replacement for your spot, if you are on stand-by and don't get in, or if a class is canceled.

Cobb Stewart and Eleanor Hibben
Super Saturday Coordinators

Special Sightings

- The Spring 2001 issue of Quilt magazine is on the newstands. The cover is a picture of a quilt by Jo Ann Brown with an article on page 32. This page also has a quilt by Nancy Mirman. Page 34 has a picture of Liz Doyle's MY Y2K quilt and a quilt by Cathy Neri on page 35.
- The November/December issue of the Long Island Quilters' Society newsletter mentioned "the lovely redwork" display at our show last May.
- The January-February issue of Quilter's Newsletter Magazine has a letter by Harley Lewis of Hartsdale, NY (p. 60) with a photograph of the five new Torah covers for Congregation Kol Ami. Appliqued and embroidered, the covers were designed by congregant Robin Ascher and made by members Rhoda Adler, Mimi Feinberg, Gladys Goldmann, and Harley Lewis.
- Travelers passing through San Francisco saw chenille coats and jackets at The Rafael's on Geary St. These articles were made by Dana Fuller.

Surface Design Challenge

Please bring your freezer paper resist challenge fabric to the January meeting. Share your experiences with us and show off your wares!

Our next challenge will be bleach discharge, pick up the instructions and see examples at the January meeting as well. This challenge will be month by month so anyone interested in learning new techniques need not be intimidated by taking on a new "commitment." Join the fun and learn with us!

Questions or comments to
Melanie Testa
davanie@snet.net
203 327 1414

A quilt is not a quilt ... until it's quilted!



Help for basting and/or customized machine quilting
is only a phone call away!

Caroline Kearney

914-228-6332

January 2001

Northern Star Quilters' Guild
P.O. Box 232
Somers, New York 10589



First Class Mail

Linda Von Ahn
30 Greenfield Rd.
Mahopac, NY 10541

