

NSQG Newsletter – October 2012

- Sat 6 Longarm SIG
- Tue 9 Show Committee
- Tue 9 Board Meeting
- Tue 16 Guild Meeting
- Wed 17 Workshop: "Slash and Burn"
- Wed 17 Comfort Quilts
- Fri 19 Newsletter submissions due
- Sat 27 The Sticklers SIG
- Wed 31 Comfort Quilts

*...and heading into
next month...*

- Sat 3 Longarm SIG
- Tue 6 Board Meeting
- Sat 10 Landscape SIG

President's Message

Happy Fall!

Well, Mother Nature took control of our September meeting plans. I must apologize for the short notice in canceling the meeting. I know it was an inconvenience for some of you, but the situation was changing quickly and your safety was at the forefront of my mind. I thank those who called to tell me about the inclement weather in lower and middle Westchester. By 5:30 pm I was without power and trees were blocking many of the roads in Somers and Katonah.

Please remember always to put your safety first and to check the website for updates. That is our means of communicating with the membership. Should there be a need to cancel, I will try my very best to have notices posted earlier. Once the snow arrives, let's hope it lands somewhere else! ☺



Christine Wilhelm, *At Sunrise*

Saturday, September 15 was a wonderful day in Oaks, PA. The NSQG bus trip was a big success. There were plenty of hearty laughs, good conversation and new acquaintances made.

Our Red and White quilts made quite a statement. The display seemed to go on and on. As I lingered, once again admiring the camaraderie and talent of NSQG, I heard many heartfelt compliments by the show visitors. What a joy! Thank you for making us shine in the quilting world!

President's Message, *Continued*

At September's Board meeting, Board members received updated policy, procedure and timeline books. Over the past year, a team of five board members updated several of the book's sections to reflect current practice. My hope is that this will help clarify what each role contributes to the Guild – which will be very helpful when the nominating committee begins its process in January. A copy of the current book (known as the "Blue Book") is on view at the Library during Guild meetings.

The October meeting will be busy as we catch up with September's items and go forward with our scheduled events. I am so excited for us to come together as a group again. June just seems so long ago!

Enjoy the fresh air and the beautiful colors of fall!

Patti Calautti, President

President@Northernstarquilters.com

Programs

I know we all were disappointed not to hear **Gloria Loughman** speak at September's Meeting. Having spent a few days with Gloria, I can say she is a lovely person -- and she gave a great workshop! Everyone loved Gloria and felt that they learned a tremendous amount.

October: **Pat Pauly**

Lecture: Tue, Oct 16

"The New Face of Art Quilts"

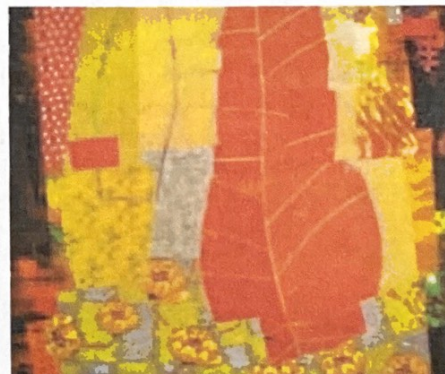
In October, we welcome **Pat Pauly** from Rochester, New York. Pat is an art quilter who designs contemporary quilts while maintaining the integrity of traditional quilts. Pat's pieced art quilts are very recognizable once you know her work. In "The New Face of Art Quilts," Pat will compare traditional quilts to modern, avant-garde art pieces. She will discuss techniques, materials, and composition in contemporary quilt design.



Pat Pauly, *George*

Workshop: Wed, Oct 17
"Slash and Burn" (one-day class)

Pat's workshop, "Slash and Burn," will be held the following day at Lake Lincolndale. Pat will show us how to combine and recombine a set of fabrics to generate the beginning of a spontaneous, contemporary quilt. Be prepared for quick, active and fresh design possibilities, using line, contrast, repetition, and value. All skill levels are welcome. Visit <http://www.patpauly.com/workshops.htm> for a course description and supply list.



Pat Pauly, "Slash and Burn" sample

Programs, Continued

November: Merry May

Lecture: Tue, Nov 13 *

"Rags to Riches" (* Please note that November's meeting is a week earlier because of Thanksgiving!)

In November, guest speaker **Merry May** will discuss the creative use of fabric in scrap quilts.

Workshop: Wed, Nov 14

"Mystery Quilt #121" (one-day class)

Workshop participants will be treated to a fun day of Mystery and Surprises at this "Mystery Quilt" workshop. This promises to be an interactive and fun workshop experience. There are some openings in this class due to the cancellation of September's meeting. Please contact me by email, or at the October meeting, if you would like to join this class!

Brief course descriptions are available in the Special Edition. Workshops are \$50, with checks made out to NSQG. Please remember that there are no refunds on workshops, so be sure to check your calendar carefully!

Barbara Sferra, VP Programs

Programs@Northernstarquilters.com

Call for Entries: 2013 Katonah Museum Small Works

Summary

In 2013, the Katonah Museum of Art will present an exhibition of traditional and contemporary quilted works tentatively called "Beyond the Bed: The American Quilt Evolution," from February 24 through June 16, 2013.

The Museum has offered the vestibule area as an exhibition space for small works by Guild members. The works will be displayed on 6 x 6-inch canvases. Participation is open to all Guild members in good standing. All works will be juried by Elin Waterston, an independent juror.

All works must be for sale. Each Guild member may make up to 3 works, though the works will not be displayed in sets. Each work entered in the show requires a registration form and a non-refundable registration fee of \$5 per canvas. The fee covers the cost of the canvas and the juror's fee.

The works will be removed from the exhibition as they are sold and new works will be added. Since it is impossible to anticipate the rate at which this will happen over the course of the five-month show, there may be an additional call for entries following the November deadline. In this case, members who already have made three canvases may make more.

There is no theme. The works should express traditional or contemporary quilt or art quilt norms and meet the following criteria:

Guidelines

1. All works must be available for display throughout the entire show.
2. The works must be original or copyright-free designs. (For example, traditional blocks and appliqué patterns are copyright-free.)
3. Each work will be presented on a 6 x 6-inch gallery-wrapped canvas. Canvases will be available upon registration at the regular monthly meetings. Only the canvases provided by the Guild may be used.
4. The edges of the canvas must be finished in a way that complements the work. This may be fabric, thread, ribbon, paint, or small embellishments, but cannot substantially increase the size of the canvas.
5. Works with irregular edges or hanging embellishments (fringe, feathers, lace, etc.) must fit within the prescribed 6 x 6-inch size. A work with sharp or unusually fragile or friable embellishments may be declined at the discretion of the Juror or the Museum. If a work is accepted, neither the Museum nor NSQG will be responsible for its safety.
6. Each work must be made of fabric or a fabric-like material, be composed of at least two distinct layers, and stitched through all layers. Works may be embellished freely to a depth of one-half inch.
7. Each work must be securely attached to the canvas with stitching or an adhesive suitable for fabrics (e.g., Golden or Liquitex gel medium or Mod Podge). Do not add any hanging mechanisms to the back of the canvas.
8. The work must be labeled on the back of the canvas (not the work) with the name of the work, your name, and the date. You also may include your contact information (address, phone, e-mail, or website address) at your discretion.
9. A photograph or photocopy of the face of the work must accompany the registration.
10. The works must be clean and in excellent condition. Pet hair and/or smoke or strong odors will disqualify an entry.
11. Works that do not conform to these guidelines will be disqualified. In addition, at the Museum's sole discretion, some works may be declined for exhibition.



Don Gough, *Rural Route*

Registration and Fee

- There is a non-refundable registration fee of \$5 per canvas.
- If paying by check, please make check payable to NSQG.
- You may register for one, two or three canvases -- i.e., \$5 for one, \$10 for two or \$15 for three.
- Registration will take place at the October and November meetings (Oct 16 and Nov 13).
- Registration forms and canvases will be available at those times.

Delivery of Finished Works

- **Due to the cancellation of September's meeting, the deadline for finished works has been extended to the December meeting (Dec 18).**
- Deliver works to NSQG at JFK. Works finished before December may be submitted at the November meeting.
- Jurying will take place after the submission period concludes.

Sale Price

- The Museum has established the price for each work at \$75.
- Of this amount, the Museum retains \$35 and the Guild retains \$5. The artist will receive \$35.
- Neither the Guild nor the Museum guarantees that any particular work will sell.
- Payment for works that have been sold will be made by NSQG as soon as possible after the exhibition closes in June.

Return of Unsold Works

- Any works unsold when the show closes on June 16 will be returned to the Guild. (Do not contact the Museum!)
- The works will be held by the Museum Liaison (**Melanie Hulse**) and available for pick-up at Comfort Quilts meetings through the summer. If not picked up during the summer, the works will be returned at the September 2013 meeting.
- A "Small Works Claim Card" will be provided when the works are dropped off. This card will serve to claim your works in the event they are unsold at the close of the Museum show. For the safety and protection of your works, you must present your Small Works Claim Card before your work will be returned.
- If you have arranged for someone else to pick up your work, you must sign your Small Works Claim Card and give it to that person. No exceptions will be made.

Communications

- A print-friendly version of this information is available online.
- All communications or questions about this project should be addressed to **Melanie Hulse** or **Patti Calautti**. Please do not contact the Museum directly.

Melanie Hulse, Museum Liaison
Patti Calautti, President

Membership

First, I'd like to thank all who remembered to send their registrations prior to our September meeting. As we know, our September meeting was the victim of some unfortunate weather. The raffle will go on, however, in October for those members who did submit their registrations on time. We have five gift certificates and are excited for the five lucky members who will receive them.

As of September we had 123 paid members, including nine who have joined recently. Our total membership (including those who haven't yet paid their dues) comes to 252. If you haven't yet sent your registration, please do so immediately....as we're preparing to print the directory.

If you're a new member and would like to be paired with a mentor, please contact me. We'll match you with one of our veteran members who will be happy to show you the ropes. We will continue to have a new member/guest table at each month's meeting, as well.



Judy Gignesi, *My Red Maple*

Show your Quilts!

Please contact me if you'd like to display your quilts at one of our monthly meetings. Our members are always so happy to see one another's works, past and present. If you don't have enough quilts to show -- I realize that many of us give our quilts away! -- we can combine two or more people for a show. It's a wonderful venue, and always very much appreciated. Please consider participating!

Chris Ruggieri, VP Membership
Membership@Northernstarquilters.com

Hospitality

If your last name begins with **A, B, or C**, and you prepared a snack for the September meeting, I thank you even though the meeting was cancelled. We will continue with the original schedule, but feel free to bring a snack any other month if you wish.

If your last name begins with **D, E or F**, please bring a snack for the October meeting. Some ideas include cheese and crackers, trail mix, finger foods, cookies, brownies or whatever is your specialty!

I would like to thank **Kendell Storm** for her great ideas for the monthly raffles. October's raffle will feature items from The Quilt Bug in Esperance, NY. Kendell has purchased some great fabric and notions and Kris Driessen, the owner, has graciously donated a few items. You can buy three tickets for \$1 at the meeting.



Carol Sterk, *Batwings and Broomsticks*

Thinking Ahead...

Last December, we started the tradition of donating food to local food banks. I think it would be nice to try it again this year. Last year we donated to the Food Bank for Westchester and the Food Bank of Lower Fairfield County. Please let me know if you have any other suggestions or if you'd like to donate to the same organizations again this year.

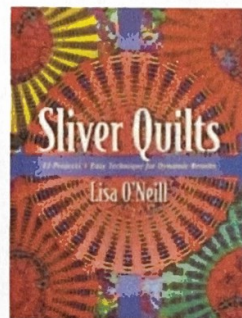
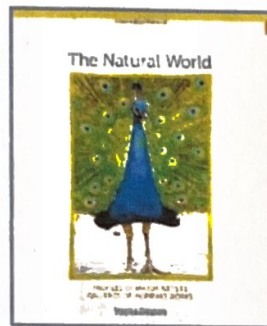
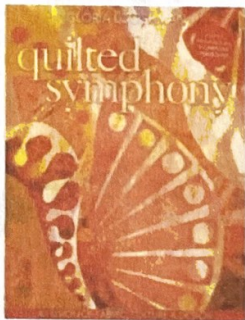
Also, please let me know if you're able to help with this project! It's not a large commitment; primarily early arrival at our December meeting (Dec 18) to help with collection and possibly a drop-off later that week. Please let me know if you'd like to help out!

Helen Boland, Hospitality
Hospitality@Northernstarquilters.com

Library

We have several new books that will be available at the Library table in October:

- *The Natural World: Art Quilt Portfolio* by Martha Sielman
- *Sliver Quilts* by Lisa O'Neill
- *Wearable Waves: Delightful Designs for Quilted Jackets and Vests* by Karen Eckmeier (*Karen donated this book to our Library!*)
- *Quilted Symphony* by Gloria Loughman



We also have the newest issues of each of our four magazine subscriptions: *American Quilter*, *Australian Patchwork and Quilting*, *Machine Quilting* and *Quilting Arts*.

As always, if there is a book, magazine or DVD that you would like to see in our Library, please contact me or stop by the Library table on our meeting night.

Finally, if you received an email reminder last month about an outstanding library book, please remember to bring it to October's meeting. If you're unable to attend the meeting, please mail it to me beforehand.

Jackie Fowler, Library Chair

Quilt Show

2013 Show Update

The Quilt Show Committee is hard at work – vendor invitations have been sent, the Admissions Committee has already emailed the first quilt show “shout out” to guilds in a seven-state area, and the show pin design is in its final stage of completion.

The Quilt Registrar, Publicity and Communications Committees joined forces over the summer to create a special entry form designed for children who would like to enter their quilts in the show. The form is available online.

Last but not least, our 2013 Raffle Quilt was quilted by the talented **Angie Vertucci** and bound by **Susan Fasnacht**, the driving force behind the production of this year's quilt! We would like to thank all of the committee members who already have put in many volunteer hours in the planning of our 2013 show.

Calling all Members!

Hopefully, you used the evening of our cancelled guild meeting to work on an unfinished quilt that you plan to enter in the show this year! Ongoing preparations for the show only set the scene for the main event: THE QUILTS! The quilt exhibition is the heart and soul of our show, and WE NEED YOU, the members, to make a commitment to contribute your quilts in order to make the show the best it can be! Everyone's work is important and valued. The creativity, workmanship and diversity of styles in this guild are truly amazing, and we know that, working together, this year's display will be spectacular!

Silent Auction

It's not too early to start thinking about the Silent Auction! This event, held at the Quilt Show, is a fun way to raise money for our rent, speakers, workshops, and all of the other benefits we get from our Guild. It's fun and much appreciated by members and guests alike. We try to keep the quilts at a maximum perimeter of 100" (25 x 25). Smaller is good, but not too small! Silent Auction co-chairs **Carol Auer** and **Carolyn Langevin** will start collecting quilts whenever you are ready.



Mary Waterman, *Hilltop Houses*



Norma Schlager, *Configuration VI, Salsa City*

Build-a-Block

Joanne Finnegan, Cathy Hopkins and Mary O'Mara, the Build-a-Block co-chairs for 2013, will be ready to accept your donations of batting and 100% cotton fabric at the October meeting and will continue to collect your fabric donations throughout the year. They will introduce themselves and provide more detailed instructions at October's meeting.

Special Exhibits

The guidelines for Special Exhibits remain the same as last year's and are available on our website for your convenience. Please study them carefully as your Special Interest Group or other group moves forward with planning its display for the show. It would be appreciated if you would contact **Maria Catalano** or **Tamar Drucker**, the Quilt Hanging co-chairs, as soon as possible to let them know of your intention to mount an exhibit and your space requirements.

Carol Sterk and **Diane Linker**, VPs Quilt Show
QuiltShowChairs@Northernstarquilters.com

Education

Special Interest Groups (SIGs)

I'd like to thank all the leaders of our SIGs for their continued work over the summer break. Because of their diligence, we've made a smooth transition into NSQG's new year.

A new SIG is in the planning stages. If you would like to meet informally before the monthly meeting to knit, embroider, bead, or just "sit and sew," please let me know.

NSQG currently offers the following SIGs that explore members' common interests:

- Art Quilts
- Hand Appliqué
- Landscape
- Long Arm
- The Sticklers ("Dear Jane")

Guild members are welcome to join any of the groups at any time. Check our website or the Special Issue for additional details. Upcoming meeting dates are posted in the blue column on our home page.

Got Scraps?

I'm looking for a few volunteers to share their scrap projects at February's meeting. A nice variety of projects would include quilts, home decorating items, apparel, bags, and greeting cards all made from scraps, strips, strings, selvages, orphan blocks and men's ties.

Once again we'll use a "round-robin" format as guild members move from one table to the next. This will enable participants to hear from a number of volunteers about their sewing techniques and/or processes for organizing and sorting their scraps.

Please send me your suggestion and we'll fit you in.

Bonnie Hunter Workshop Participants!

Have you completed your quilt or quilt top? If so, please be sure to bring it to November's meeting for a special "Show and Tell" segment! We've noticed that the placement of color and value dramatically impacts the quilt's overall design and visual impact. It will be wonderful to see the quilts, all at once, during Show and Tell! Is your quilt top "somewhat" complete? Perhaps the November date will provide just the gentle nudge you've been looking for!

Meg Mooar, VP Education
Education@Northernstarquilters.com



Bonnie Hunter, *Jared takes a Wife*

Communications

Many thanks to everyone who sent info and photos about their quilt-related accomplishments and news for this month's newsletter!

Do you have news of your own? Don't be shy! Please send your info and photos to News@Northernstarquilters.com.



Printed copies of the Special Issue will be available at October's meeting. A print-friendly version is available on our website for download. (Check the blue box at the right side of our homepage.)

In addition, the electronic version of the Master Calendar is being updated as necessary and also will be available online.

Carolyn Finn, VP Communications
News@Northernstarquilters.com (news stories and photos)

Find us Here

Diana Sharkey's "First Ladies' Log Cabin" received two ribbons at the Country Quilters' Guild's "Harvest of Quilts XI" show last month. It was awarded a blue ribbon in its category as well as recognition with a "Judge's Choice" ribbon.

Debbie Bein's "Almost an Echo" diptych has been juried into the "Art=Quilts=Art" exhibition at the Schweinfurth Art Center in Auburn, NY. The show will be on view from October 28 through January 6.

Two quilts by **Denise Giardullo**, a new NSQG member, have been juried into the "Encounters with Cancer" exhibition at the Brush Gallery in Lowell. The works will be on view from November 3 through December 1.



Diana Sharkey, *First Ladies' Log Cabin*



Denise Giardullo, *Holding Up*



Denise Giardullo, *Recovery Quilt*



Debbie Bein, *Almost an Echo* (diptych)

Find us Here, Continued

Three of **Tamar Drucker's** works recently were shown internationally. "Tamara, today you are in the Laundromat" was included in the Rishon LeZion Cultural Centre's "100 Years of the Kibbutz" exhibition in April. The exhibition then traveled to the UK for the Birmingham Quilt Festival in August.

Tamar's "Letters from My Grandfather" was on view at the Jerusalem Theatre in May.

A third quilt by Tamar is currently on view at the Mormon University in Jerusalem as part of the Israel Quilters' Association's "The Many Faces of Jerusalem" exhibition. The exhibition travels to Houston in 2013.

Congratulations, All!



Tamar Drucker, *Letters from my Grandfather*

Area Shows

"Pennsylvania Quilts II: Patterns and Variations: An Exhibit of Antique Quilts from the Packwood House Museum." Lewisberg, PA: Packwood House Museum. Through October 13.

"Scraps to Treasures." Quilt Show of the Cocheco Quilters. Rochester, NH: Rochester Community Center. October 13-14, 2012.

"Back-Stitch: A 25-Year Retrospective of Advances and Milestones in Quiltmaking." Lowell, MA: New England Quilt Museum. Through October 14, 2012.

"Great Quilts, Great Stories: Treasures from the Permanent Collection." Lowell, MA: New England Quilt Museum. October 18 - December 29, 2012.

"Line Dances: Quilts by Catherine Whall Smith." Storrs, CT: University of Connecticut Libraries. Through October 19.

"Line & Color: Lisa Call." New York: The ArtQuilt Gallery. Through October 20, 2012.

Wayside Quilters' Guild Quilt Show. Sudbury, MA: Lincoln Sudbury High School. October 20-21, 2012.

"The Uncommon Thread." Chester, VT: Vermont Institute of Contemporary Arts. Through October 21.

"William Morris in Appliqué," lecture by Michele Hill to the Garden State Quilters' Guild. Chatham, NJ: Chatham United Methodist Church. October 22.

"Art=Quilts=Art." Auburn, NY: Schweinfurth Memorial Art Center. October 28 through January 6, 2013. [NSQG]



Tamar Drucker,
*Tamara, Today you are in the
Laundromat*

Area Shows, Continued

"Man-Made Quilts: Civil War to the Present." Shelburne, VT: Shelburne Museum. Through October 28.

"Encounters with Cancer." Lowell, MA: Brush Art Gallery. November 3 through December 1, 2012. [NSQG]

Eleventh Annual "Harvest of Quilts XI." Evening Star Quilters. Mineola, NY: Mineola Community Center. November 3-4, 2012.

"Tactile Architecture." International Quilt Festival at Houston. Houston, TX: George R. Brown Convention Center. October 27 - November 4, 2012. [NSQG]

"Judi Blaydon/Variations: Pieced Quilts and Fabric Altars." New York: ArtQuilt Gallery. November 6 through December 15.

"Village Square Quilters' Quilt Celebration XII." Scarsdale, NY: Greenville Elementary School. November 10-11, 2012. [NSQG]

"9 x 9 x 3 Salon des Refusés." Exhibition of the Textile Study Group of New York. New York: Guild Gallery II at the Fulton Center of the Hudson Guild. Through November 18, 2012. [NSQG]

"Homefront & Battlefield: Quilts & Context in the Civil War." Lowell, MA: American Textile History Museum. Through November 25.

"Masters II: SAQA Art Quilts Curated by Martha Sielman." Lowell, MA: New England Quilt Museum. January 17 - April 13, 2013

[NSQG] = NSQG Member(s) represented

Many Thanks to **Nancy Hantman** for researching and compiling this list!

Thank you to our Advertisers!

Note: In the electronic versions of this newsletter, each card provides a hyperlink to the Advertiser's website.

Quilt Basket 

939 Route 376
Wappingers Falls, NY
845.227.7606
www.quiltbasket.com


Fabric Mart NY, Inc.
Authorized PFAFF Sewing Machine Dealer

2019 Crompond Road
Yorktown Heights, NY

914.962.3328


The NIMBLE THIMBLE Inc.

19 Putnam Avenue
Port Chester, NY
914-934-2934


The Happy Quilter

Valley Cottage, NY
845.268.5744
www.happyquilter.com

The Art Quilt Gallery•NYC Fall Season

Lisa Call: Sept 11 – Oct 20
Judi Blaydon: Nov 6 – Dec 15
www.artquiltgallerynyc.com
Tuesday – Saturday, 11 – 6 pm
133 West 25th St., NY, NY