

NSQG Newsletter ~ September 2012

- Sat 1 Longarm SIG
- Wed 5 Comfort Quilts
- Tue 11 Board Meeting
- Sat 15 Bus Trip to Oaks, PA
- Tue 18 Guild Meeting
- Wed 19 Workshop: Layer by Layer
- Wed 19 Comfort Quilts
- Fri 21 Newsletter submissions due
- Sat 22 The Sticklers SIG

President's Message

Welcome to the September 2012 issue of NSQG's On-Point!

The Board has been working throughout the summer to bring you an exciting guild year.

Our first announcement is about an exciting collaboration with the Katonah Museum of Art. We have an opportunity to display and sell our quilted works during their exhibition tentatively called "Beyond the Bed: The American Quilt Evolution." The show opens February 24 and closes in June.

Please read the information notice below for details. **Melanie Hulse** and I will present examples of the work and answer questions at our upcoming Guild meeting.

We also have a exciting lineup of great speakers. This month, **Gloria Loughman** visits us from Victoria, Australia. Join us in the auditorium as Gloria shows how she creates her magical quilted landscapes.

We're offering many wonderful activities this fall. Please look around at our meeting for more information on these and more:

- 2013 Guild Challenge
- Comfort Quilts Raffle - October
- Holiday Boutique - November
- Katonah Museum of Art exhibit
- Workshop sign-ups



Gloria Loughman, *Bingal Bay*

So bring a friend, sit in on a Special Interest Group, and see what's happening. I look forward to catching up on Tuesday, September 18.

Patti Calautti, President
President@Northernstarquilters.com

Programs

Welcome back to another wonderful year of Programs and Workshops!

September: Gloria Loughman

Lecture: Tue, Sept 18
"The Quilted Landscape"

On September 18th we welcome **Gloria Loughman** from Australia. Have you thought about making a quilt to capture your memories of a special place? No matter what the inspiration, creating a landscape quilt is something you can do! Gloria will show us how in her slide lecture, "The Quilted Landscape."

Workshop: Wed, Sept 19
"Layer by Layer"

Learn to experiment with design and color while combining elements of a landscape in an abstract way. Quilters of all levels can create a wall hanging that is unique and visually exciting. Techniques will include foundation piecing, mosaics, soft edge appliqué and invisible machine appliqué. Three patterns for abstract designs will be available for purchase, but are not required. The workshop will be held at Lake Lincoln Dale Clubhouse. *(Currently full, but please contact me if you'd like to join the waitlist.)*



Gloria Loughman, *Golden Dreaming*

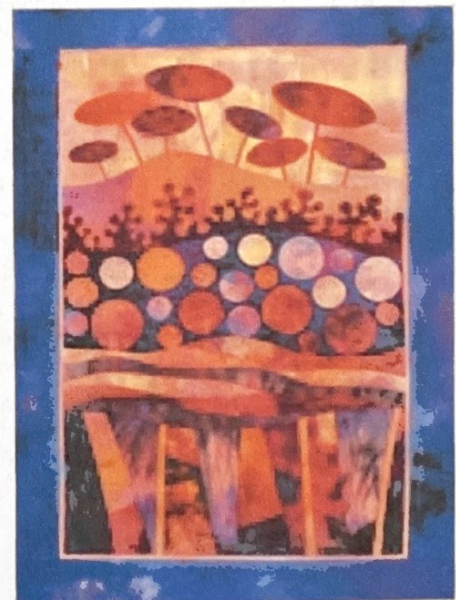
October: Pat Pauly

Lecture: Tue, Oct 16
"The New Face of Art Quilts"

In October, we welcome **Pat Pauly** from Rochester, New York. Pat is an art quilter who designs contemporary quilts while maintaining the integrity of traditional quilts. In "The New Face of Art Quilts," Pat will look at similarities between the composition of traditional quilts and the techniques, materials and design used in contemporary quilts.

Workshop: Wed, Oct 17
"Slash and Burn" (one-day class)

Learn to compose using quick and spontaneous fabric design. Fabrics will be combined and recombined to create a modern design. This workshop will focus on how to read elements for line, contrast, repetition and value. Quilters of all levels are welcome. [Click here for course description and supply list.](#)



Gloria Loughman, "Layer by Layer"
Workshop sample

Workshops are \$50, with checks made out to NSQG. Please remember that there are no refunds on workshops, so be sure to check your calendar carefully!

Barbara Sferra, VP Programs
Programs@Northernstarquilters.com

Call for Entries: 2013 Katonah Museum Small Works

Summary

In 2013, the Katonah Museum of Art will present an exhibition of traditional and contemporary quilted works tentatively called "Beyond the Bed: The American Quilt Evolution," from February 24 through June 16, 2013.

The Museum has offered the vestibule area as an exhibition space for small works by Guild members. The works will be displayed on 6 x 6-inch canvases. Participation is open to all Guild members in good standing. All works will be juried by Elin Waterston, an independent juror.

All works must be for sale. Each Guild member may make up to 3 works, though the works will not be displayed in sets. Each work entered in the show requires a registration form and a non-refundable registration fee of \$5 per canvas. The fee covers the cost of the canvas and the juror's fee.

The works will be removed from the exhibition as they are sold and new works will be added. Since it is impossible to anticipate the rate at which this will happen over the course of the five-month show, there may be an additional call for entries following the November deadline. In this case, members who already have made three canvases may make more.

There is no theme. The works should express traditional or contemporary quilt or art quilt norms and meet the following criteria:



Guidelines

1. All works must be available for display throughout the entire show.
2. The works must be original or copyright-free designs. (For example, traditional blocks and appliqué patterns are copyright-free.)
3. Each work will be presented on a 6 x 6-inch gallery-wrapped canvas. Canvases will be available upon registration at the regular monthly meetings. Only the canvases provided by the Guild may be used.
4. The edges of the canvas must be finished in a way that complements the work. This may be fabric, thread, ribbon, paint, or small embellishments, but cannot substantially increase the size of the canvas.
5. Works with irregular edges or hanging embellishments (fringe, feathers, lace, etc.) must fit within the prescribed 6 x 6-inch size. A work with sharp or unusually fragile or friable embellishments may be declined at the discretion of the Juror or the Museum. If a work is accepted, neither the Museum nor the NSQG will be responsible for its safety.
6. Each work must be made of fabric or a fabric-like material, be composed of at least two distinct layers, and stitched through all layers. Works may be embellished freely to a depth of one-half inch.

Call for Entries: 2013 Katonah Museum Small Works

Guidelines, Continued

7. Each work must be securely attached to the canvas with stitching or an adhesive suitable for fabrics (e.g., Golden or Liquitex gel medium or Mod Podge). Do not add any hanging mechanisms to the back of the canvas.
8. The work must be labeled on the back of the canvas (not the work) with the name of the work, your name, and the date. You also may include your contact information (address, phone, e-mail, or website address) at your discretion.
9. A photograph or photocopy of the face of the work must accompany the registration.
10. The works must be clean and in excellent condition. Pet hair and/or smoke or strong odors will disqualify an entry.
11. Works that do not conform to these guidelines will be disqualified. In addition, at the Museum's sole discretion, some works may be declined for exhibition.

Registration and Fee

- There is a non-refundable registration fee of \$5 per canvas.
- If paying by check, please make check payable to NSQG.
- You may register for one, two, or three canvases -- i.e., \$5 for one, \$10 for two, or \$15 for three.
- Registration will take place at the September and October meetings (Sept 18 and Oct 16).
- Registration forms and canvases will be available at those times.

Delivery of Finished Works

- Finished works are due at the November meeting (Nov 13). (Note: the November meeting is a week earlier than usual to accommodate the holiday.)
- Deliver works to NSQG at JFK. Works finished before November may be submitted at the October meeting. If the November meeting is canceled — and **only if** the November meeting is cancelled — the deadline will be the December meeting (Dec 18).
- Jurying will take place after the submission period concludes.

Call for Entries: 2013 Katonah Museum Small Works

Sale Price

- The Museum has established the price for each work at \$75.
- Of this amount, the Museum retains \$35 and the Guild retains \$5. The artist will receive \$35.
- Neither the Guild nor the Museum guarantees that any particular work will sell.
- Payment for works that have been sold will be made by NSQG as soon as possible after the exhibition closes in June.



Return of Unsold Works

- Any works unsold when the show closes on June 16 will be returned to the Guild. (Do not contact the Museum!)
- The works will be held by the Museum Liaison (Melanie Hulse) and available for pick-up at Comfort Quilts meetings through the summer. If not picked up during the summer, the works will be returned at the September 2013 meeting.
- A "Small Works Claim Card" will be provided when the works are dropped off. This card will serve to claim your works in the event they are unsold at the close of the Museum show. For the safety and protection of your works, you must present your Small Works Claim Card before your work will be returned.
- If you have arranged for someone else to pick up your work, you must sign your Small Works Claim Card and give it to that person. No exceptions will be made.



Communications

- A print-friendly version of this information is available online.
- All communications or questions about this project should be addressed to **Melanie Hulse** or **Patti Calautti**. Please do not contact the Museum directly.

Melanie Hulse, Museum Liaison
Patti Calautti, President

Membership

Thank you to all who have already renewed their memberships for 2012-13!

As we do each year, we will hold a drawing at the September meeting and five lucky members will win a gift certificate to a local fabric shop. To be eligible, your 2012-13 Membership Form and payment must be received PRIOR to the meeting. Click here to access the form and instructions online.

We're looking forward to another wonderful year at NSQG. If you are a new member, please stop by the Membership Table at the front of the cafeteria, introduce yourself to our greeters, and let us know if you have questions or there's anything we can do to help you integrate into the Guild. If you'd like to volunteer to help with Membership, please let us know.

Our **Member Showcase** program highlights the creativity and talent of our members. If you have a suggestion for a showcase theme or are willing to showcase your own quilts or a collection of quilts you own, please let me know.

Just a reminder: Even if you didn't submit your registration in time for the raffle, it is important that you do so (and update your information, if applicable) by November in order to be included in this year's directory.

Chris Ruggieri, VP Membership
Membership@Northernstarquilters.com



Diane Linker, *As Time Goes By*

Hospitality

It seems to me that whenever friends or family gather it usually involves some kind of food. There is something comforting about meeting with friends and sharing a snack. The Hospitality Committee would like your help in continuing this tradition.

If your last name begins with A, B or C, please bring a snack to the September meeting. Please try to bring finger-type foods. Suggestions include cookies, brownies, veggies and dip, crackers and cheese. Remember that your efforts will be rewarded with a chance for one of the raffles.

Raffle tickets are three for a dollar. Kendell Storm has done a terrific job of selecting special fabrics, materials, and supplies that will appeal to the diversity of quilters within our guild. Be sure to stop by, check out the selections, and take a chance!

Finally, I would like to ask for volunteers to help out each month with set-up and clean-up. If we have at least 10 volunteers, this means that each would need to take only one of the meetings. Please let me know at the September meeting if you are able to help. Thank you!

Helen Boland, Hospitality
Hospitality@Northernstarquilters.com

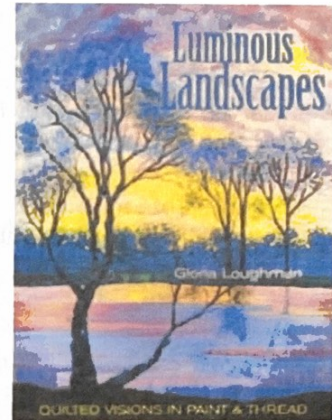
Library

Welcome Back!

The summer inventory of NSQG's books and DVDs has been completed and you will find the updated lists on our website. For your convenience the lists are arranged by title, author, and subject; the DVD section will appear on the title list with "DVD" listed first and the actual title after that.

This month our speaker is Gloria Loughman and you may be interested in borrowing her book *Luminous Landscapes*, which will be available at the Library table. In addition, if Art Quilts, Design or Special Techniques is of interest, you may refer to the Library list by those subjects to see the books we have available in those areas.

Please remember that this is **your** Library so if there is a book, magazine or DVD that you would like to see, please email me or stop by the Library table on Tuesday.



Jackie Fowler, Library Chair

Quilt Show

The Quilt Show Committee for 2013 has been formed and is already hard at work preparing for World of Quilts XXXIV. The success of any show rests with the members who give of themselves to make it happen. We hope you will join in the excitement by volunteering and entering your quilts. If you have any suggestions for the show or if you want to volunteer some time during the planning stages this fall and winter, please contact one of us.

Also, we encourage you to start working on some of those UFOs so you can put them in the show. Registration will run from January 1 through March 31.



Micki Tedeschi, *Betty Davis Eye*

This year the Show Committee is making a special effort to reach out to young quilters. A simplified registration form for them is already up on the website. Registration will be limited to the first fifteen quilts by young quilters. If you are teaching your grandchild or a special someone in your life how to quilt, we would love to display his or her work.

Carol Sterk and **Diane Linker**, VPs Quilt Show
QuiltShowChairs@Northernstarquilters.com

Education

Please bring your projects to share with the members at Show and Tell. We're particularly looking forward to seeing quilts made during summer getaways!

Through the winter programs we hope to inspire you to move out of your comfort zone and try something new. Here's what we're planning:

January – Surface Design on Fabric

Learn how to take store-bought quilting fabric and alter the color or design through simple, non-toxic products

February – Got Scraps?

Attention all hoarders! Members will exhibit sewing projects made from strips, strings and orphan blocks leftover from previous projects.

Please let me know if you would like to conduct a demo during either program.

Meg Mooar, VP Education

Education@Northernstarquilters.com

Charitable Activities

2013 Raffle Quilt

The 2013 Raffle Quilt, shown here, was beautifully coordinated by **Susan Fasnacht** and assembled by Guild members. Its expert quilting was done by **Angela Vertucci**, a local longarm quilter and new member who graciously donated her time and talent. The quilt's king-sized batting was donated by Quilt Basket of Wappingers Falls.

As a result of these generous donations, this year's beneficiary, the Pound Ridge Fire Department, will receive nearly all of the funds from our raffle ticket sales. Tickets will be available in early 2013.



NSQG's 2013 Raffle Quilt

2014 Raffle Quilt

Please contact me before October 1 if you, or a group of friends, have an idea for our 2014 Raffle Quilt. Ideas will be submitted to the Board for approval.

Also, it's not too early to start thinking about a deserving local charitable organization you'd like to nominate as the recipient.

Maureen Schulman, Charitable Activities

Communications

The Special Issue is now available online! Visit our homepage to download a print-friendly version. In addition, color-printed copies will be available at the September meeting. Many thanks to **Deirdre Abbotts** for her professional work on the print job.

As always, please let us know if you will be (or have been) featured in an exhibition or publication. Our newsletter and website are a great way to share our accomplishments and to see one another's latest work! Please send your information and photos to News@Northernstarquilters.com. The deadline is generally the Friday following the Guild's monthly meeting. (Exact dates are provided in the master calendar in the Special Issue.)

2012-13 promises to be a great year for our Guild! I look forward to sharing our news among ourselves and with others.

Carolyn Finn, VP Communications
News@Northernstarquilters.com (news stories and photos)

Members' Marketplace

Have you been searching for a long-discontinued fabric? Would you like to carpool to an upcoming quilt retreat? Have you recently upgraded your machine and hope to sell your old one? Are you aware of an opportunity for Guild members to show their work?

If so, "Members' Marketplace," the "Classified" section of our monthly newsletter and website, may be for you! Please send a brief description and contact information to News@Northernstarquilters.com in advance of the upcoming newsletter's deadline.

Electric Singer Sewing Machine. AJ148313

110-120V

25 to 75CYC

SS AU50156

In its own wooden console which opens up and to the side from the top (well-used, but could be refinished). The outside electric wiring would need to be refurbished. \$80

Alto's Mat Cutting System. New - used only once. \$80.

Please Contact **Nike Cutsumpas**.

Carolyn Finn, VP Communications
News@Northernstarquilters.com (news stories and photos)

Find us Here

Norma Schlager's "Emerald City" (part of her "Configuration" series) and three works by **Debbie Bein** were included with "New Legacies 30: Contemporary Art Quilts," a selective juried show at the Lincoln Center Gallery in Fort Collins, CO. **Debbie Bein's** "Broken Promises," shown here, received the Jurors' Choice Award.



Debbie Bein, *Broken Promises*



Debbie Bein, *Hallowed Ground*



Mayann Weinberg, *Different View III*



Judy Gignesi, *Windy October Day*

"City Lights," another work within **Norma Schlager's** series, traveled north to Lowell, MA, for the "Whistler Inspired Art Quilts" show at the Whistler House Museum of Art. The exhibition, which was in conjunction with the Lowell Quilt Festival, also included work by **Margaret Phillips**.

Debbie Bein's "Hallowed Ground," a memorial to New York after 9/11, has been juried into the "Tactile Architecture" exhibition at Houston's International Quilt Festival and will be on view October 31 through November 4.



Benedicte Caneill, *It's all Blue*

Several NSQG members donated works to SAQA's online auction, which supports the group's activities and mission. Works by **Debbie Bein**, **Nike Cutsumpas**, and **Mayann Weinberg** will be auctioned the week of September 17.

Norma Schlager's quilt will become available the week of September 24.

Margaret Phillips' and **Judy Gignesi's** works were selected to be auctioned live during the IQF in Houston.

Benedicte Caneill's "It's all Blue" was included in the auction's initial round and has sold already.



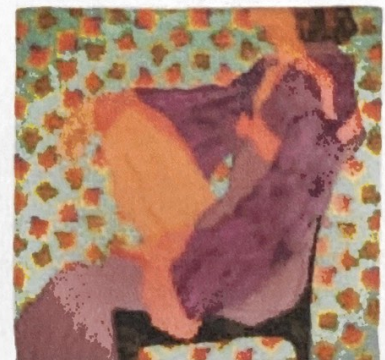
Norma Schlager, *Emerald City*



Norma Schlager, *City Lights*



Nike Cutsumpas, *Downfall*



Margaret Phillips, *Purple Kimono*

Find us Here, *Continued*

As we know, our 2012 Red-and-White Invitational quilts were shown at the XIX Pennsylvania National Quilt Extravaganza in Oaks, PA from September 13-16. The traditional pieced quilts by **Pat Baker**, **Maria Catalano**, and **Barbara Powers** shown here were among the more than 90 beautiful and diverse quilts on view.



Norma Schlager, *Fractured*



Barbara Powers



Maria Catalano



Pat Baker

Congratulations, All!

Area Shows

Shows Featuring NSQG Members

Pennsylvania National Quilt Extravaganza XIX. Oaks, PA: Greater Philadelphia Expo Center. September 13-16, 2012.

"9 x 9 x 3 Salon des Refusés." Exhibition of the Textile Study Group of New York. New York: Guild Gallery II at the Fulton Center of the Hudson Guild. Through November 18, 2012.

"Things with Wings: Planes and Quilts." Windsor Locks, CT: New England Air Museum. September 17-23, 2012.

"Tactile Architecture." International Quilt Festival at Houston. Houston, TX: George R. Brown Convention Center. October 27 - November 4, 2012.

"Village Square Quilters' Quilt Celebration XII." Scarsdale, NY: Greenville Elementary School. November 10-11, 2012.

Other Shows of Interest

"35th Annual Harvest of Quilts," Belknap Mill Quilters Guild Show. Laconia, NH: Conference Center at Lake Opechee Inn. September 29-30, 2012.

"Fall Festival of Quilts." Monadnock Quilters' Guild Show. Peterborough, NH: South Meadow School. October 6-7, 2012.

"Back-Stitch: A 25-Year Retrospective of Advances and Milestones in Quiltmaking." Lowell, MA: New England Quilt Museum. Through October 14, 2012.

Area Shows, *Continued*

"Scraps to Treasures." Quilt Show of the Cochecho Quilters. Rochester, NH: Rochester Community Center. October 13-14, 2012.

"Line Dances: Quilts by Catherine Whall Smith." Storrs, CT: University of Connecticut Libraries. Through October 19.

"The Uncommon Thread." Chester, VT: Vermont Institute of Contemporary Arts. Through October 21.

Wayside Quilters' Guild Quilt Show. Sudbury, MA: Lincoln Sudbury High School. October 20-21, 2012.

"Man-Made Quilts: Civil War to the Present." Shelburne, VT: Shelburne Museum. Through October 28.

Eleventh Annual "Harvest of Quilts." Evening Star Quilters. Mineola, NY: Mineola Community Center. November 3-4, 2012.

Many Thanks to Nancy Hantman for researching and compiling this list!

Thank you to our Advertisers!

Quilt Basket 

939 Route 376
Wappingers Falls, NY
845.227.7606
www.quiltbasket.com

Fabric Mart-NY, Inc.
Authorized PFAFF Sewing Machine Dealer

2019 Crompond Road
Yorktown Heights, NY

914.962.3328



The NIMBLE THIMBLE INC.

19 Putnam Avenue
Port Chester, NY
914-934-2934


The Happy Quilter

Valley Cottage, NY
845.268.8744
www.happyquilter.com

THE CITY QUILTER



Fabric • Notions • Classes • Books • Gifts

**Bernina & HandiQuilter
Machines & Accessories**

cityquilter.com/handiquilter.html
cityquilter.com/bernina.html

City Quilter's Fall

- 50+ Classes
- Tula Pink Event
- 7 Series Bernina Arrives
- Our own Laminates:
Susy's NY & NYC
Subway Map
- More fabric than ever!

Note: In the electronic versions of this newsletter, each card provides a hyperlink to the Advertiser's website.